

DCP and CP Main Software Upgrade Instruction Sheet

INTRODUCTION

These instructions explain how to download the main software to the DCP or CP projector using the DLP Cinema™ Firmware Installation Program. This Windows® based program executes an automated and streamlined upgrade process. Allow approximately 1-2 hours for the upgrade process.

SYSTEM REQUIREMENTS

The DLP Cinema™ Firmware Installation Program operates under Windows® 2000 XP. The projector must be running main 9.2 or higher and must be connected to your PC via Ethernet or serial cable. All components in the projector must be fully functional. Disconnect the TPC or any other equipment connected through Ethernet to prevent unexpected communications during the upgrade process.

UPGRADE PROCESS SUMMARY

The DLP Cinema™ Firmware Installation Program detects which versions of main software and formatter software are present in the projector, and compares them to the new software being installed. Under default settings, the program installs and verifies all necessary software-upgradeable flash binaries and disk-chip files on the projector's Interface Module, Processor Module and the 3 formatters - ignoring identical files between versions. The process then automatically resets the projector to resume normal operation. The entire process may take 1-2 hours; however, it is typically less than 15 minutes if using Ethernet and upgrading from relatively recent firmware.

WHAT FILE DO I USE? The DLP Cinema™ Firmware Installation Program works in conjunction with the specific Release Installation file intended for downloading to the projector so only the differences between versions are corrected. This ensures accuracy and minimizes download time. The Release Installation file (.dlpcinema) is unique for each software version and is in the following format:

Release*.*.dlpcinema, where "*.*" is the version number (e.g., 12.0.35 for version 12.0.35)

WHERE IS EACH RELEASE INSTALLATION FILE? Before beginning any download, the release installation file for the desired version of software must reside with the rest of the software components comprising that version. For convenience, the newest Release Installation file is supplied at the Christie FTP site in the same directory as its assorted subdirectories - it is ready to use from its present location. **NOTE:** *To avoid a failed installation do not place the installation package too deep in the laptop folders.*

INSTRUCTIONS



CAUTION

Stop all PCM/TPC communication to the TI electronics before upgrading.

NOTE: *Content of menus may differ slightly from the examples shown.*

SETUP

1. Extract the software package into a folder near the root of the hard drive (i.e., C:\release12_0_35).
2. Ensure the following is within a single directory on your PC (Windows® 2000 XP):
 - DLP Cinema™ Firmware Installation Program (.exe)
 - Current Release Installation file "Release*.*.dlpcinema" (i.e., the newest software for installing in projector).
 - DCP and CP Main Software Upgrade Instructions (.pdf)
 - Assorted subdirectories.
3. Connect your PC to the projector via Ethernet or serial cable, and power up both.
4. Before proceeding ensure all PCM/TPC communication to the TI electronics is stopped. There are multiple methods of stopping communications between the PCM/TPC and the TI engine:

For TPC:

- a. Disconnect the TPC from the system.
- b. Use NetTerminal application to issue a (STP 1) command to the TPC.

For PCM:

Use NetTerminal application to issue a (STP 1) command to the TPC. **NOTE:** *For software V1.2 or higher, 2 additional methods are available.*

- a. From the **Main** menu of the CDP select **Configuration>Administrator>Mgmt Ethernet>Stop DLP Comm**. **NOTE:** *Proper login is required to use this feature.*
- b. Press **Enter** to stop DLP communication.

Or:

- a. From the web user interface **Admin>General** menu select **Stop TI Communication**.
NOTE: *Proper login is required to use this feature.*

Using NetTerminal to stop PCM/TPS communications to TI electronics

1. Start the NetTerminal application.
2. Enter the IP address of the PCM/TPC to connect.
3. Port Address should be set to 5000.
4. From the top menu bar, choose **Connection> Connect**. If a valid connection has been established the drop-down edit area is editable.
5. In the drop-down edit window send the user ID command (UID "username" "password") to login to the projector. Replace **username** and **passwords** with a valid service level account and password.
6. Issue a (UID?) to check if you are logged in.

For TPC:

- Login successful: UID! 001 1
- Login unsuccessful: UID! 001 0

For PCM:

- Login successful: UID! "service" 06
- Login unsuccessful: 65535 00000 ERR00003 UID: Invalid user name or password

7. Issue a (STP 1) to stop communication from the PCM/TPC to the TI electronics.
8. Complete the steps outlined in [Run DLP Cinema™ Firmware Installation Program](#).
9. After the upgrade is complete, re-establish communications with the electronics by:
 - Reconnect the TPC (if disconnected),
 - power cycling the projector, or;
 - issue an (STP 0), via NetTerminal.

NOTE: To ensure the projector software recognizes the new TI firmware version load the equivalent of "release.dlpcinema" file onto the PCM/TPC.

UPGRADING THE TPC VERSION FILE

Refer to *Upgrading the TPC Version File Instruction Sheet (020-100022-xx)*, included in the DLP release package.

UPGRADE DLP VERSION FILE TO CP2000-ZX/M

DlpVersions.shar, which is included in the DLP release package, has the batch file to install the latest DLP version file to CP2000-ZX/M projector models. For installation information, refer to **CP2000-ZX Main Software Upgrade Instruction Sheet (013-100749-xx)**, included in the DLP release package. After installation, reboot the projector. Check if the DLP version is shown correctly either through the CDPs **Status>Versions>TI** menu or the web user interface **About** menu.

RUN DLP CINEMA™ FIRMWARE INSTALLATION PROGRAM

1. Open the DLP Cinema™ Firmware Installation Program and enter the projectors's Ethernet address (default = 198.168.206.10). If you don't know the address, click the **Projector Search** button. Alternatively, if the IP address cannot be determined, use a serial connection and set the serial port settings.
2. Log on with the Christie service user name and password. Upon successful login, current projector information will be detected and displayed in the left data window (**Figure 1**).
3. Click the **Select Release Installation File** button to access the file-selection dialogue window (**Figure 1**).

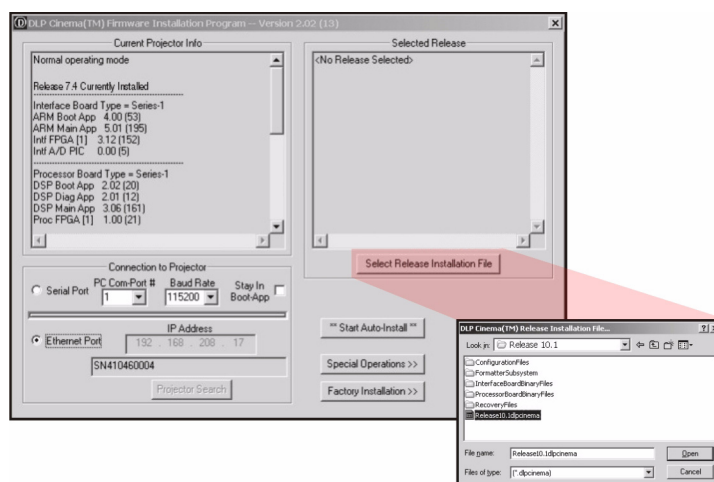


Figure 1 Establishing Communication with Projector

SELECT RELEASE INSTALLATION FILE (RELEASE*.*.DLPCINEMA)

1. For any download, use the Release Installation file unique to the version of software being installed, such as *Release8.0.dlpcinema*. The Release Installation file provides essential instructions for the specific download, ensuring a complete and accurate process.
2. Open the *.dlpcinema* file. Information about the selected version is added to the main menu (**Figure 2**).

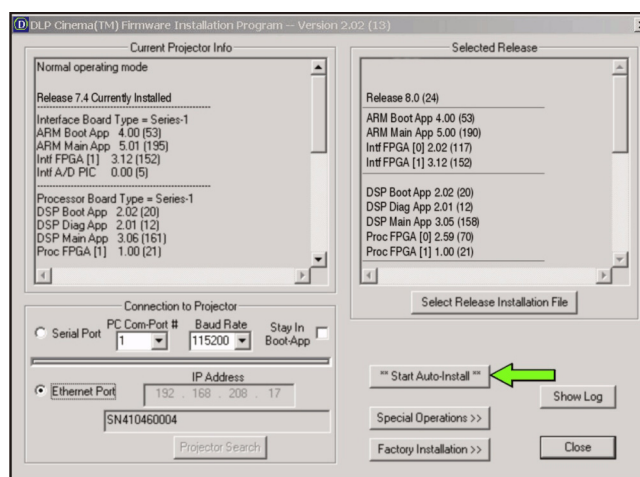


Figure 2 Projector and Release Information

START DOWNLOAD



WARNING

DO NOT reset or power OFF the projector during a download. Loss of power during some operations (i.e., writing to flash) may render the affected hardware non-functional. Reset only if prompted.

For best results, use the **Start Auto-Install** button default for all downloads. This operation compares all components installed in the projector with those of the selected new software version. The program then installs anything that does not exactly match the desired release, confirms these modified/new components, resets the projector and reconnects to complete a successful upgrade. Depending on which version of software is being installed, the download takes approximately up to 10-40 minutes via Ethernet. Status bars are displayed during the process. Upon completion, a dialogue box indicates download status.

NOTE: *The download will take up to 3x longer via a serial link.*

CHECK LOG

To see a processing log of all upgrade events, press the **Show Log** button.